

# ReClaim II

## FIXED RESILIENT SYSTEM

ReClaim II eliminates cost to remove and dispose of steel channel and embedded anchors when replacing existing channel and clip type floors. Which also eliminates the expense of costly patching of displaced concrete at previous anchor locations. Special low-profile preassembled subfloor panels with recessed resilient pads are aligned between existing channel rows for a floor profile that typically eliminates special ramping at doorways.



**INFINITY**  
Wood Floors



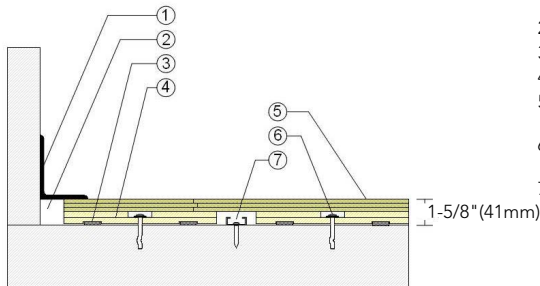
# ReClaim II

eClaim II is a low profile floor specifically designed to reduce labor and disposal requirements when replacing channel and clip systems.



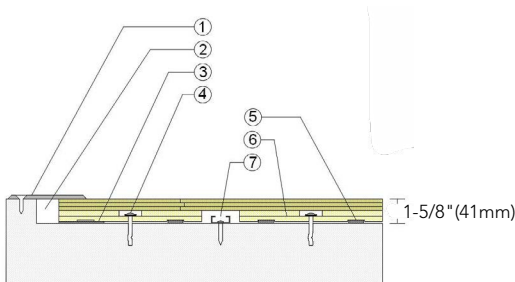
1. Infinity MFMA Maple
2. APA Pre-assembled Plywood Subfloor
3. Subfloor Anchor
4. 1/4" (6mm) ECO Resilient Pad
5. Existing Steel Channel
6. Concrete

## WALL BASE



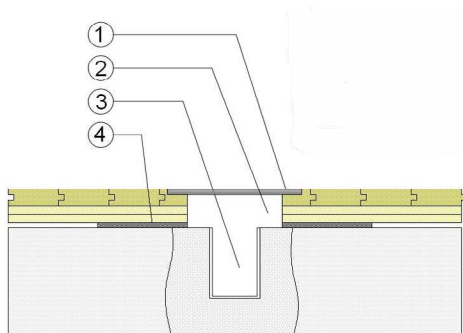
1. 3" x 4" (76mm x 101mm) Vent Cove Base
2. 1 1/2" (38mm) Min. Expansion Space
3. Recessed ECO Resilient Pad
4. ReClaim II Subfloor Panel
5. 25/32" (20mm) MFMA Maple Flooring
6. ReClaim II Concrete Anchor Pin Assembly
7. Existing Steel Channel & Anchor

## THRESHOLD



1. 1/4" (6mm) Aluminum Threshold
2. 1 1/2" (38mm) Min. Expansion Space
3. Solid Blocking at Doorway
4. Concrete Anchor Pin Assembly
5. Recessed ECO Resilient pad
6. ReClaim II Subfloor Panel
7. Existing Steel Channel & Anchor

## EQUIPMENT



1. Floor Plate
2. 1 1/2" (38mm) Expansion Space at all Insert & Electrical Penetrations
3. Concrete Floor Penetration
4. Solid Blocking at Insert

## Anchorage

### Green Status and LEED Contributors

## Drill and Pin



- FSC® Certified Maple - MR
- FSC® Certified Subfloor Components - MR
- Environmental Quality - 4.2
- Regional Materials - MR

## Resilience

1/4" (6mm) ECO Resilient Pad

## Profile Height

- 25/32" (20mm) flooring - 1-5/8" (41mm)

## Subfloor Construction

Pre-manufactured Panel

## System Type

Fixed Resilient

## Testing Laboratory Partners



## System Design



It is the policy of Infinity Wood Floors to continuously improve its line of products. Therefore, Infinity Wood Floors reserves the right to change, modify or discontinue systems, specifications and accessories of all products at any time without notice or obligation to purchaser.



see us at  
**Sweets.com**

